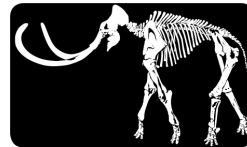


Directions and Parking



UNIVERSITY OF NEBRASKA
STATE MUSEUM
Morrill Hall

Renovation of the Memorial Stadium Loop has resulted in changes to bus drop-off and parking. The University of Nebraska State Museum appreciates your time and care in driving students to visit us.

Address:

Morrill Hall
645 N 14th Street
Lincoln, NE 68588

The Museum is located just south of 14th and Vine on the University of Nebraska-Lincoln campus.

Enter the Museum on the North side of the building.

Bus Drop-Off

Conventional (standard-sized) buses should come north or south on 16th street, turn onto S Street, turn right onto 15th Street, and drop students off at the corner of 15th and U. See Map 2.

Teachers, once the bus drops you off, please lead your students west between the College of Business and Kauffman Residential Center and enter the Museum on the north side of the building. See Map 2.

Shorter buses and vans may come south down 14th street to drop students off and use the circle to turn around. Please note that conventional buses will have to do a three-point turn in order to turn around here.

Bus Parking

Buses can park south of the 14th and Avery parking garage on the south side of the street in front of “Authorized Vehicles Only” and yellow “No Parking Bus Loading Zone” signs. If there is no parking available here, buses will need to park in “Lot 56” north of the Devaney Center at the intersection of Antelope Valley Parkway North and Military Road. See Map 1.

If parking at the Devaney Center, drivers are welcome to walk to the Hendricks Training Complex Lobby on the southwest corner of the Devaney Center (Address: 1600 Court Street, Hendricks Training Complex). The lobby is open at 8 a.m. daily and has padded bench seating, restrooms, and televisions. See Map 1.

Cars and Vans

Parking for cars and vans is available in the “A” lot at 14th and Vine Street just north of Morrill Hall. White signs identify Museum visitor spaces along the south side of the lot. Be sure to sign in at the front desk with your license plate number or you will be ticketed.

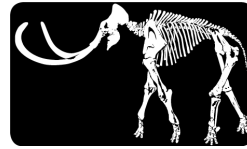
Parking passes are available upon request for Lot C, three blocks north of Morrill Hall on 14th St. If you would like to request parking passes for Lot C, please contact Museum Reservations prior to your field trip so that we can either mail them to you or leave them at the front desk with your name.

Other options include the 14th/Avery Parking Garage or the Stadium Drive Parking Garage (a fee is charged of \$1.25/hour or \$7/day credit/debit card only).

Handicapped Parking and Accessible Entrance

Handicapped accessible parking is located on the east side of the museum. You may access the building through the east door, following the posted directions.

Contact: Front desk: 402-472-2637 or Museum Reservations: 402-472-6302 or elephant@unl.edu

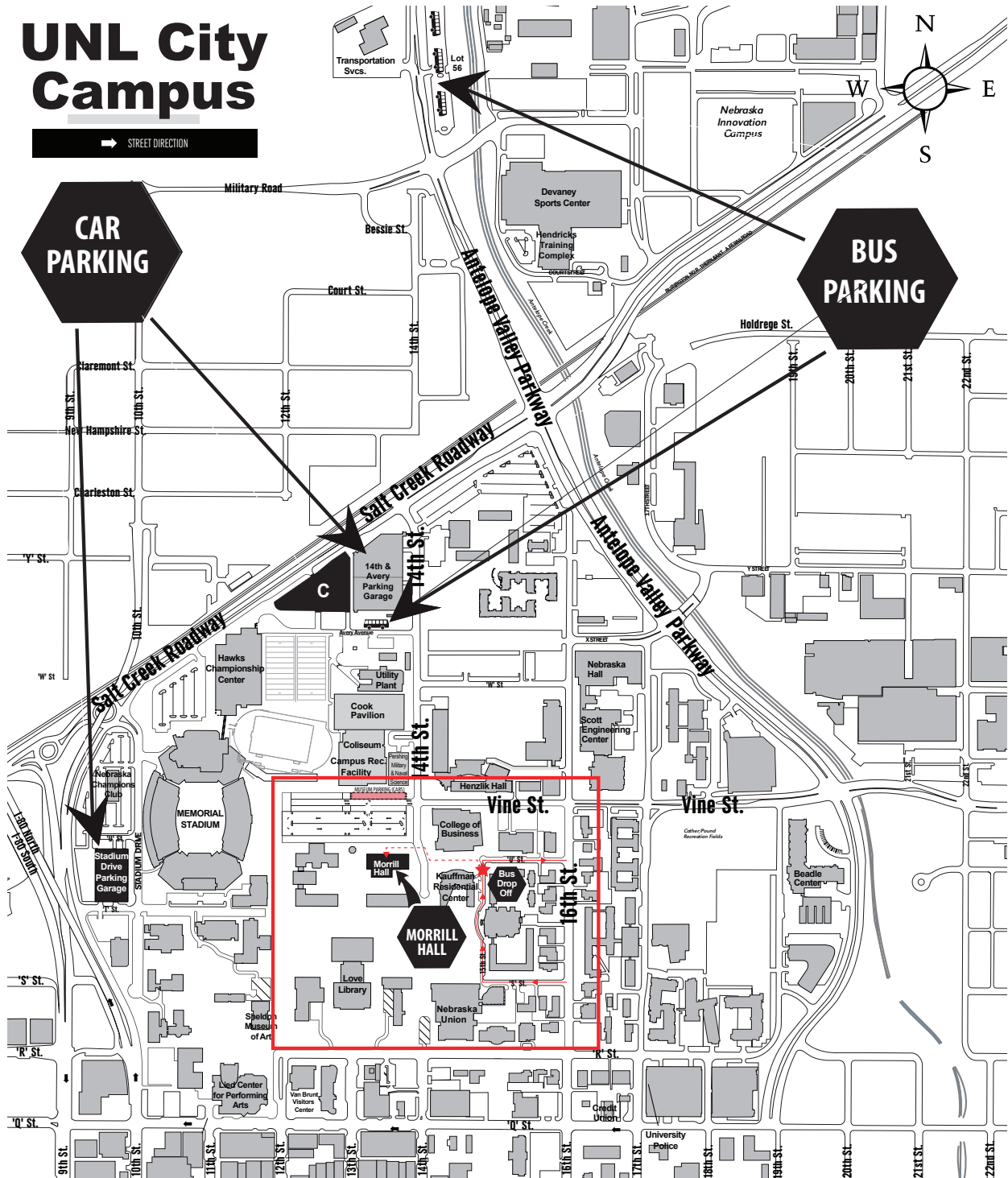


UNIVERSITY OF NEBRASKA
STATE MUSEUM
Morrill Hall

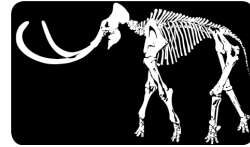
Map 1: Campus Map and Parking

UNL City Campus

→ STREET DIRECTION



TO CALL MORRILL HALL:
Front Desk: 402-472-2637 | Reservations: 402-472-6302



Map 2: Bus Drop-Off

